

PARKER JAMES

ESTATES

Established since 1995



## Flaxman Court

Flaxman Terrace London WC1H 9AP

- Available 31st August
- Lower ground floor
- Secure well maintained building
- Two shower rooms
- Close to a number of leading universities
- Furnished
- 53 sqm
- Two double bedrooms
- Student friendly
- Kings Cross station five minutes away

£784 Per Week

# Flaxman Court

Flaxman Terrace London WC1H 9AP

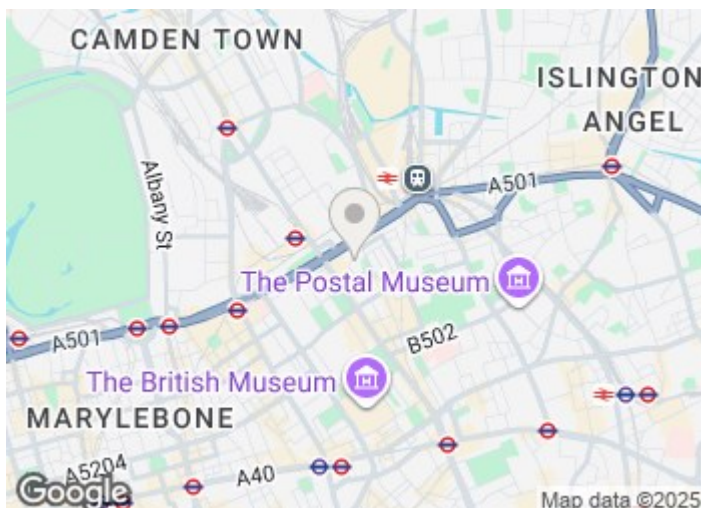


Available from the 31st of August on a furnished basis is this well presented lower ground floor flat in Bloomsbury with residents parking.

The 53 sqm property briefly comprises an entrance hallway, reception room with space for dining and which is open plan to a fully fitted kitchen with integrated appliances including a dishwasher, two double bedrooms one of which benefits from a fully tiled ensuite shower room and second fully tiled shower room off the hallway.

Flaxman Court is a secure well maintained building with its entrance on Flaxman Terrace a quiet street within walking distance of superb overground and underground transport connections including St Pancras International, Kings Cross and Euston stations.

The Kings Cross and wider Bloomsbury area has over the past decade seen, and continues to see, vast regeneration changing it from just being widely regarded as an excellent transport hub but now to also a vibrant destination sought after by young professionals and those studying in the capital with its many cultural venues, popular bars and restaurants, the world renowned British Library and the pleasant walks that can be taken along the Regents Canal.



[Directions](#)



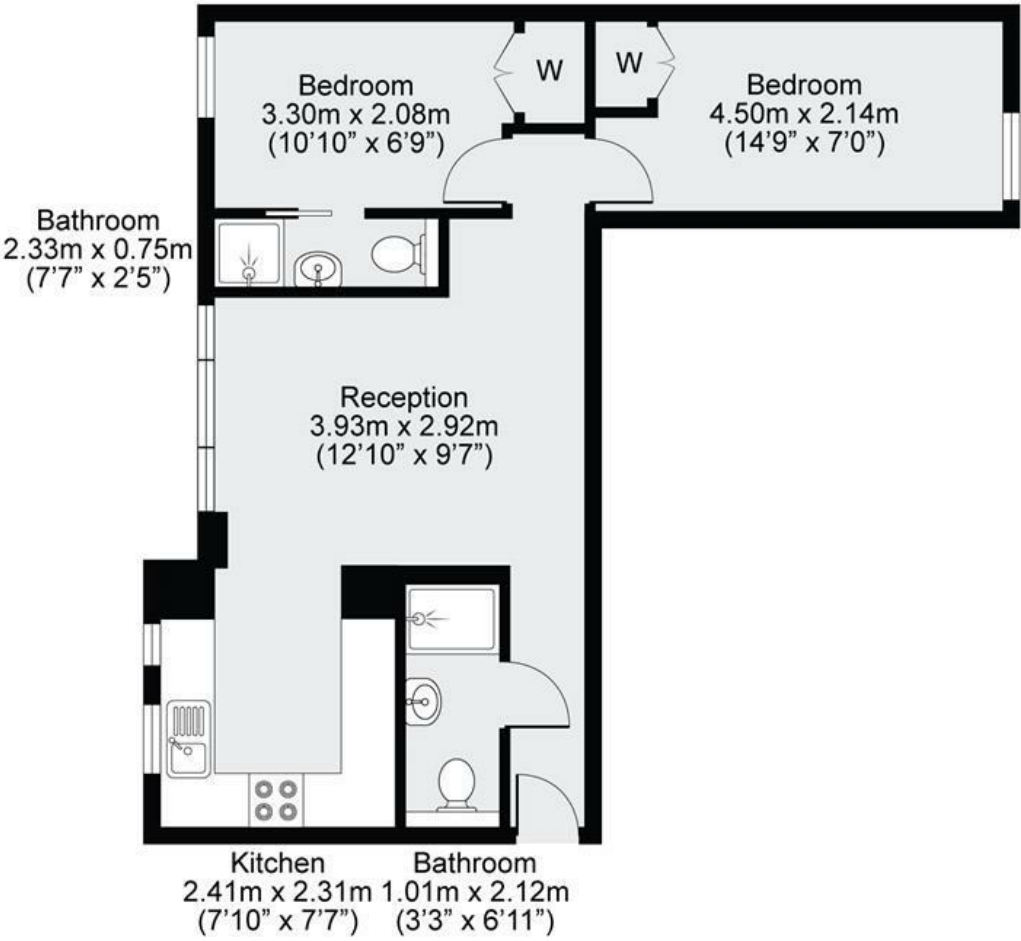




Floor Plan

Flaxman Terrace, Bloomsbury, London, WC1H

Approx. Gross Internal Area = 47.3sqm / 509.1sqft



Ground Floor



Disclaimer: Floorplan measurements are approximate and are for illustrative purposes only. While we do not doubt the floorplan accuracy and completeness, you or your advisors should conduct a careful, independent investigation of the property in respect of monetary valuation.



These particulars, whilst believed to be accurate are set out as a general outline only for guidance and do not constitute any part of an offer or contract. Intending purchasers should not rely on them as statements of representation of fact, but must satisfy themselves by inspection or otherwise as to their accuracy. No person in this firms employment has the authority to make or give any representation or warranty in respect of the property.

